

XERO  
TECHNOLOGY  
ADVANCED 

## XTA | 1.5 Slot IP55

metric 40mm Wide x 68mm High

imperial 1.748" Wide x 2.677" High





# Highly Configurable

All XTA products can be made with lit, or unlit, corners which provide the designer with a myriad of design options.

## bend options



135°



cross 90°



tee 90°



custom



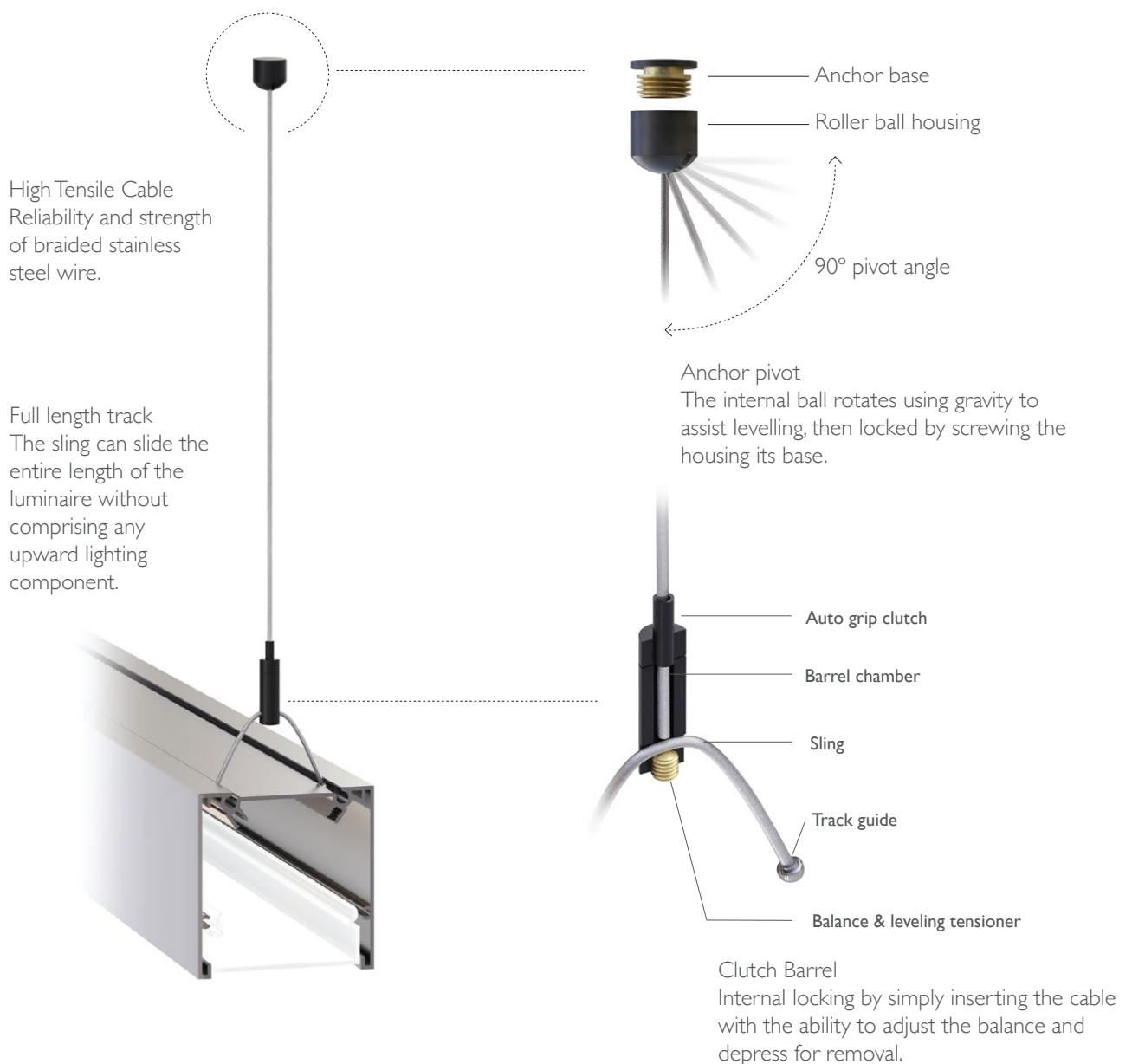
corner 90°



ceiling to wall

# Rollerball Suspension™

The smart suspension system that can be mounted on any surface, whether a flat or sloped ceiling, or even a wall. Height adjustment is done at the luminaire for fine tuning close to the ground. The flexibility of luminaire location allows complete freedom of lighting design.



## DATA TABLE

LED Engine	4ft Length 1120mm	Luminous Flux (Delivered Lumens)	LO	HO	
			1900	3500	
	Xeramix	CRI	80+		
		Lumen Maintenance:	114,000 Hours ( L90 B10 @ 50° )		
	Proformax	CRI:	90+		
		Lumen Maintenance:	82,000 Hours ( L80 B10 @ 35° )		
Warranty	Xeramix		10 years		
	Proformax		7 years		
Electrical	Power Consumption		Between 20 and 45w/m		
	Voltage input range		120 – 277V		
	Control methods		Dimming options for white light: 0-10V, DALI, DMX Optional RGB / Sunset Dimming control DMX or DALI XI		
	Total harmonic distortion THD		9.8% max		
	Approvals		UL / CE / CCC / AS:NZS / EMC		
Physical	Dimensions		40 X 73 mm		
	Weight per metre		3.2kg (7lbs) average weight		
	Housing		Aluminium Extrusion with anodised or powdercoated finish		
	Downward diffuser		Frosted acrylic lens / Polycarbonate lens / microprism lens		
	Connections		Speed connect joining system with polarised electrical connection between sections		
	Compatible ceiling type		Suitable for drywall ceilings, metal pan, concrete, timber and T bar grid ceilings		
	Mounting		Field adjustable rollerball wire suspensions / rod suspensions / wall mounting / surface mount		
	Joiner options		Lit corner 90° / Cross 90° / Tee 90° / Straight 180° join		
	Operating temperatures		Xeramix = -25°C to 50°C (-13°F to 140°F) Proformax = -25°C to 35°C (-13°F to 95°F)		
	Environment		IP55 (Not in direct sunlight)		
	Minimum length adjustment		Xeramix = 1mm Proformax = 25mm		
LED board types		Xeramix LED boards in 25 / 100 / 280 / 560mm lengths Zhaga compatible Proformax LED boards in 50 / 280mm / 560mm lengths Zhaga compatible			

## PENDANT LENGTHS

DESCRIPTION	PENDANT LENGTHS										
luminaire length	585	863.60	1143.00	1422.40	1701.80	1981.30	2260.60	2540.00	2819.40	3098.80	3378.20
inches	23	34	45	56	67	78	89	100	111	122	133
'560 board multiples	1	1.5	2.0	2.5	3.0	3.5	4.0	4.5	5.0	5.5	6.0

## CONTINUOUS LENGTHS

DESCRIPTION	CONTINUOUS RUNS										
total luminaire length	3657.60	3937.00	4216.40	4495.80	4775.20	5054.60	5334.00	5892.80	5892.80	6172.20	6451.60
inches	144	155	166	177	188	199	210	232	232	243	254
'560 board multiples	6.5	7	7.5	8.0	8.5	9.0	9.5	10.0	10.5	11.0	11.5

DESCRIPTION	CONTINUOUS RUNS										
total luminaire length	3657.60	3937.00	4216.40	4495.80	4775.20	5054.60	5334.00	5892.80	5892.80	6172.20	6451.60
inches	144	155	166	177	188	199	210	232	232	243	254
'560 board multiples	6.5	7	7.5	8.0	8.5	9.0	9.5	10.0	10.5	11.0	11.5

## CUSTOM LENGTHS

CUSTOM LENGTHS
custom lengths are available in 0.0393701" [1mm] increments above the minimum pendant length of 23" [585mm]

# Optical control

All XTA profiles come with many diffuser options for glare control in any application



polycarbonate

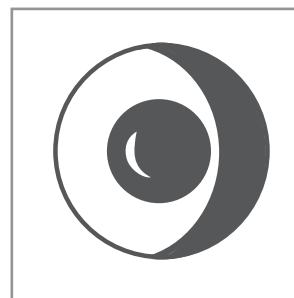


plexiglass

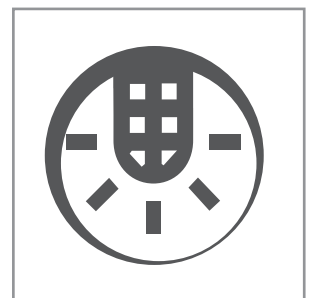


microprism

# Accessories and options



sensors / daylight  
harvesting



emergency packs

# XTA | 1.5 Slot IP55



The Xero Configurator allows you to design and build your customised lighting system. To ensure that your profile specifically caters to your project application follow the simple 8 step build process to obtain your unique DNA code. Select your profile, choose your colour, length, gear tray, output, colour temperature, mounting requirement and choose from the selection of extras

The X-Configurator can be accessed at <https://xconfigurator.xerolighting.com/>

Project Specification Sheet

### XTA 3.0 Beam

<b>Name</b>	Joe Smith
<b>Company</b>	Joe Smiths Company
<b>Email</b>	joesmith@joesmithcompany.com.au
<b>Project</b>	A very big project
<b>Fitting Type</b>	<input type="text" value="S1"/>

<b>Series</b>	XTA - Advanced
<b>IP Rating</b>	IP55
<b>LED Board</b>	Xeramix X1
<b>Size</b>	3.0 Inches Down / 1.5 inches Up
<b>Shape</b>	Beam
<b>Light Output</b>	Up / Down
<b>Diffuser</b>	Plexiglass Down / Parabolic Louver Up
<b>Colour Temp</b>	3000K Down / 5000K Up
<b>Drive Current</b>	Drive Current Down / Drive Current Up
<b>Total Light</b>	Total Light Down / Total Light Up
<b>Total Power</b>	Total Power Down / Total Power Up
<b>Efficiency</b>	Efficiency Down / Total Power Up

Copy and Paste into your project specification

**SPECIFICATION TEXT**  
*Copy and Paste into your project specification*

Type xx - XXM Xero XTA | 3.0 Square with Micro Prism diffuser, Xeramix I LED light engine, 3000°K, 50°C ambient temperature, L90 B10 14 hour life, 275Ma drive current. Efficacy of 512 lumens per watt delivered. Fitting comes complete with Speed-Connect joining system, Con Seal end plates and Lumiseal. Wire suspended with rollerball suspension system.

**RE - CONFIGURE THIS SPECIFICATION**

This project specification sheet has been generated with X Configurator. Click below to reconfigure and generate a new specification sheet.

Click to re-configure

---

ADELAIDE | AUCKLAND | BRISBANE | CHRISTCHURCH | DUNEDIN | HONG KONG  
 KUALA LUMPUR | SYDNEY | MELBOURNE | PERTH | USA | WELLINGTON

[XEROLIGHTING.COM](http://XEROLIGHTING.COM)

to access the X-configurator please visit [www.xerolighting.com/xconfigurator](http://www.xerolighting.com/xconfigurator)

---

General enquiries  
E [headoffice@xerolighting.com](mailto:headoffice@xerolighting.com) W [xerolighting.com](http://xerolighting.com)  
To get in touch with your local Xero Distributor Visit  
[XEROContact](#)



The information contained within this specification sheet is for general information purposes only. While Xero aspires to keep the information up to date and correct, we make no representations or warranties of any kind about the accuracy, reliability, suitability or availability with respect to this information, products, services, or graphics contained in this specification sheet for any purpose.