

XERO
TECHNOLOGY
INFRASTRUCTURE **XTI**

XTI | 5.0 Inground Uplight

IK10+ | IP67

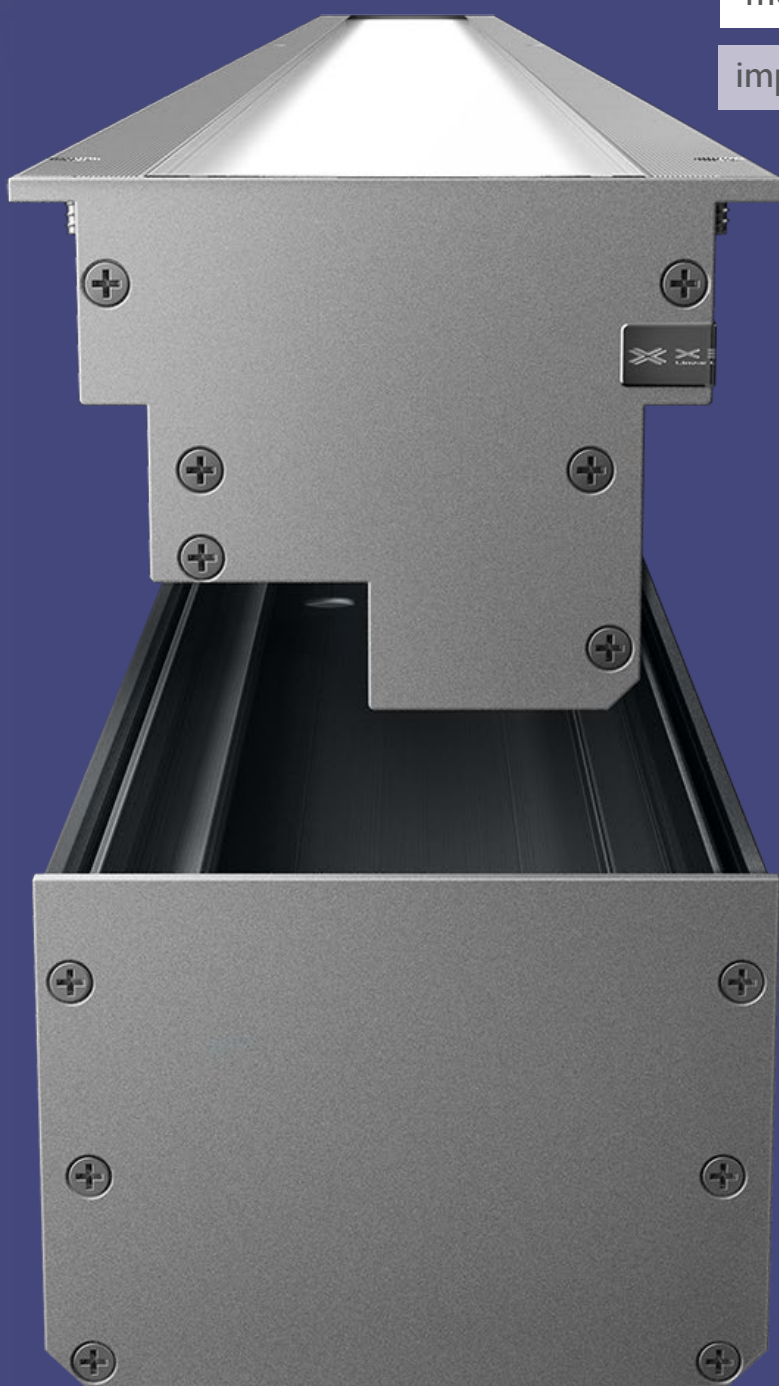
metric

122mm Wide x 90mm High

imperial

4.803" Wide x 3.543" High

Dimensions include inground niche.



XERO
TECHNOLOGY
INFRASTRUCTURE **XTI** **I**

XTI | 5.0 Inground Uplight
IP67 | IK10+



XERO
TECHNOLOGY
INFRASTRUCTURE **XTI**

Xero Linear Lighting Systems introduces the Xero Technology Infrastructure (XTI) series. XTI brings together the best available technology for any linear lighting system specifically designed for the infrastructure segment.

All XTI profiles are incrementally length adjustable by 25mm increments

UL / CE/ AUS/NZS Standards approved.
Universal 120 - 277V input, site selection drive current for variable output on the fly with optional 24 or 48V remote power supply or SELV versions available.

Partner this with high end details such as dot free diffusion and coloured interlayer.
All systems come with an inground niche for concreting or paving into the ground prior to installation.

Xero's XTI series is truly linear lighting redesigned.



higher performance longer life

The XTI | 5.0 Inground Uplight IP67 / IK10+ by Xero Linear Lighting System brings high-quality dot free illumination to infrastructure environments. Featuring the latest generation of LED technology, The XTI | 5.0 Inground Uplight IP67 / IK10+ is the perfect choice for rail, industrial and public spaces that require IP67 weather protection and vandal resistance. Xeramix LED light engines are LED boards which utilise ceramic based LED chips that provide outstanding light quality over the LIFE of the boards. The LED light engines have 114,000 hour life to L90 B10 @ 50°C ambient. This performance is unmatched.

Xero Linear Lighting Systems extends an (industry leading) full 10 year warranty using Xeramix I linear light engines to the original purchaser for the XTI series of profiles. For more information on this warranty visit: xerolighting.com/warranty



Diagram illustrating the warranty for Xeramix I linear light engines. It shows the Xeramix I logo (ceramic LED light engines) with arrows pointing to a badge that reads "STANDARD INDUSTRY BEST 10 YEAR WARRANTY".

Xero Linear Lighting Systems also offer an optional 15 year warranty using Xeramix R linear light engines to the original purchaser for the XTI series of profiles. For more information on this outstanding optional warranty visit: xerolighting.com/warranty



Diagram illustrating the optional warranty for Xeramix R linear light engines. It shows the Xeramix R logo (ceramic LED light engines) with arrows pointing to a badge that reads "OPTIONAL INDUSTRY BEST 15 YEAR WARRANTY".

General enquiries
 E headoffice@xerolighting.com
 W xerolighting.com
 To get in touch with your local Xero
 Distributor Visit www.xerolighting.com/contacts



XERO TECHNOLOGY INFRASTRUCTURE **XTI**

XTI | 5.0 Inground Uplight
IP67 | IK10+



LED technology has rapidly advanced over the last decade with criteria of quality & quantity of light, efficiency, life and cost. The XERAMIX™ philosophy is targeting performance well within nominal specification to create luminaires in a class of their own.



Multi configuration arrays

Xeramix light engines are available in 25mm, 100mm, 280mm and 560mm lengths. These lengths derive from Xero's linear fixture algorithm, resulting in the ability to manufacture any luminaire length within 1mm increments.



Industry First

Xero XTA and XTI profiles are all backed by an industry leading 10 year warranty

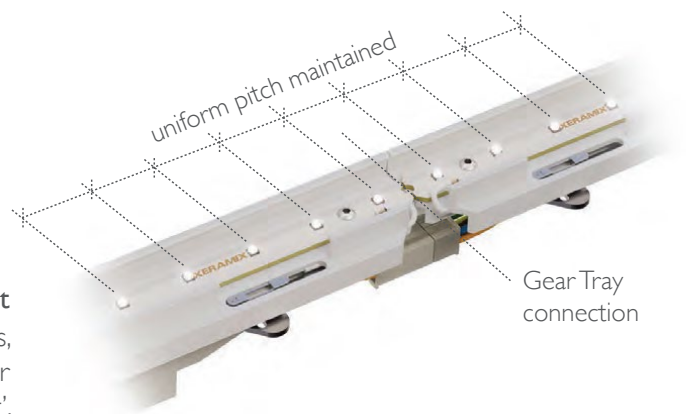
Drive current dipswitch

A simple switch configures the total luminaire wattage, lumen output and efficiency without the need to change components. Xeramix light engines have been engineered to support the broad range of drive currents.



Constant pitch, uniform light

LED pitch is maintained across multiple gear trays, creating a uniform 'dot free' appearance on the diffuser for a highly desirable, continuous 'ribbon of light'.



XERO TECHNOLOGY INFRASTRUCTURE **XTI**

XTI | 5.0 Inground Uplight
IP67 | IK10+



LED technology has rapidly advanced over the last decade with criteria of quality & quantity of light, efficiency, life and cost. The XERAMIX™ philosophy is targeting performance well within nominal specification to create luminaires in a class of their own.



Multi configuration arrays

Xeramix light engines are available in 25mm, 100mm, 280mm and 560mm lengths. These lengths derive from Xero's linear fixture algorithm, resulting in the ability to manufacture any luminaire length within 1mm increments.



Industry First

Xero XTA and XTI profiles have an unsurpassed optional 15 year warranty

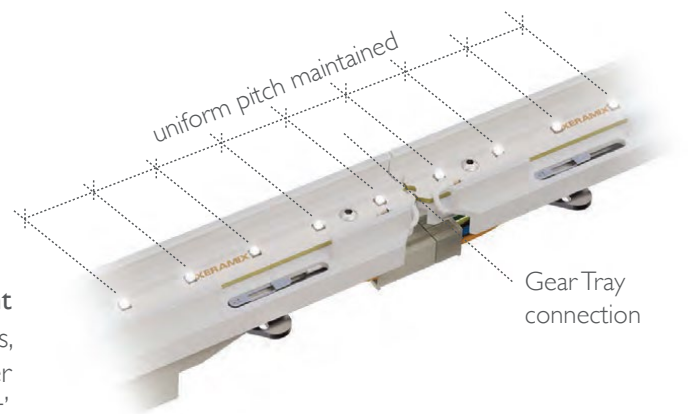
Drive current dipswitch

A simple switch configures the total luminaire wattage, lumen output and efficiency without the need to change components. Xeramix light engines have been engineered to support the broad range of drive currents.



Constant pitch, uniform light

LED pitch is maintained across multiple gear trays, creating a uniform 'dot free' appearance on the diffuser for a highly desirable, continuous 'ribbon of light'.





XTI | 5.0 Inground Uplight

IP67 | IK10+

metric

122mm Wide x 90mm High

imperial

4.803" Wide x 3.543" High

Dimensions include inground niche

technical data

DATA TABLE

Output	4ft Length 1120mm	Luminous Flux (Delivered Lumens)	LO 1900	HO 3500	
	CRI		80+		
	Lumen Maintenance		114,000 hours [L90 B10 @ 50°C] 1M hours [L70 B10 @ 50°C]		
Warranty	Xeramix 1 10 years Xeramix R = 15 years				
Electrical	Power Consumption		Between 20 and 45w/m		
	Voltage input range		120 – 277V		
	Control methods		Dimming options for white light: 0-10V, DALI, DMX Optional RGB / Sunset Dimming control DMX or DALI XI		
	Total harmonic distortion THD		9.8% max		
	Approvals		UL / CE / CCC / AS:NZS / EMC		
Physical	Dimensions		122mm x 90mm (4.803" x 3.543") including the niche		
	Weight per metre		6.8kg (15lbs) average weight		
	Housing		Aluminium Extrusion with anodised or powder coated finish		
	Diffuser		Polycarbonate clear or Polycarbonate Plexiglass		
	Distribution		Asymmetric distribution		
	Connections		Optional polarised electrical connection between sections		
	Mounting		Inground niche for concrete or paving installation		
	Joiner options		Straight joiners or butt corners		
	Operating temperatures		-25°C to 50°C (-13°F to 140°F)		
	Environment		Semi Outdoor IP67 (Not in direct sunlight)		
	Minimum length adjustment		25mm		
	LED board types		Xeramix `1 and Xeramix R boards and drivers in 25mm / 100mm / 280 and 560mm lengths – 24 – 48V system in 140mm / 280mm and 560mm Zhaga lengths		
	IK rating		IK10+		
	Vandal proof		Available with anti-vandal fasteners		
	Optional extras		Thermal throttle, environmental plug, polarised IP rated plug and socket		



XTI | 5.0 Inground Uplight IP67 / IK10+ maximum and minimum length



Please note: Multiple luminaires can be joined together to achieve any continuous length

XERO TECHNOLOGY INFRASTRUCTURE **XTI**

XTI | 5.0 Inground Uplight
IP67 | IK10+

Optical Control

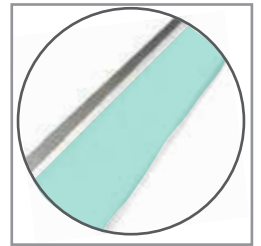
XTI profiles come with many diffuser options for glare control in any application



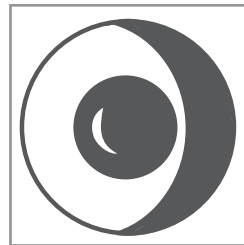
Clear Polycarbonate



Plexi Glass Polycarbonate



Coloured Interlayer



sensors / daylight harvesting



emergency packs



General Enquiries: [E lights@xerolighting.com](mailto:lights@xerolighting.com) [W www.xerolighting.com](http://www.xerolighting.com) | To get in touch with your local Xero Distributor visit www.xerolighting.com/contacts

The information contained within this specification sheet is for general information purposes only. While Xero aspires to keep the information up to date and correct, we make no representations or warranties of any kind about the accuracy, reliability, suitability or availability with respect to this information, products, services, or graphics contained in this specification sheet for any purpose.

XERO TECHNOLOGY INFRASTRUCTURE **XTI**

XTI | 5.0 Inground Uplight
IP67 | IK10+



The Xero Configurator allows you to design and build your customised lighting system. To ensure that your profile specifically caters to your project application follow the simple 8 step build process to obtain your unique DNA code. Select your profile, choose your colour, length, gear tray, output, colour temperature, mounting requirement and choose from the selection of extras

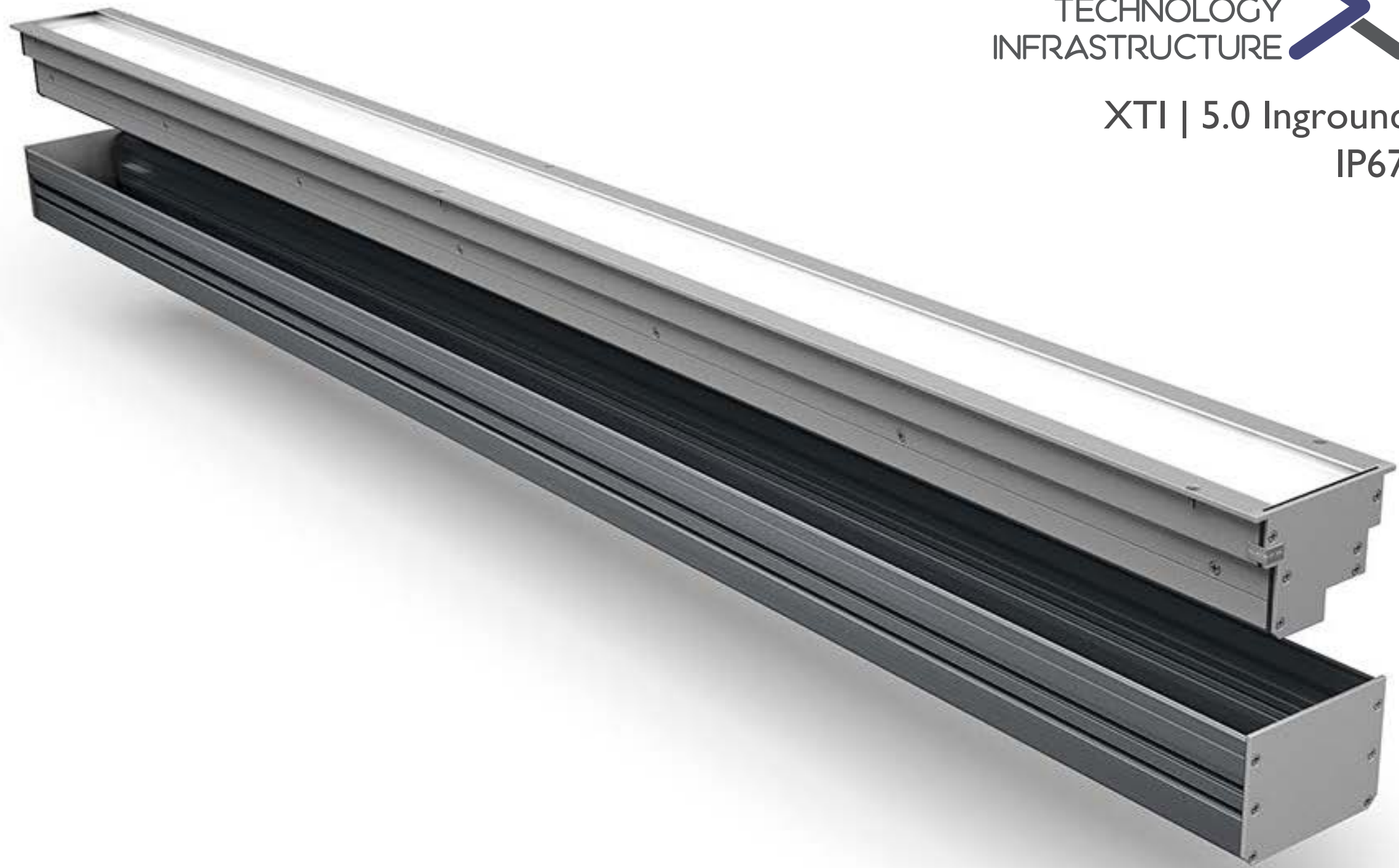


to access the X-configurator please visit www.xerolighting.com/xconfigurator

General Specifications:

- LED Luminaires shall have thermal ambient temperature rating of 50°C
- LED luminaires shall have site adjustable drive current selection capability without the need for additional parts
- LED Luminaires shall have colour spatial uniformity of 3 step macadam ellipse at end of life | 14,000 hour life to L90 B10 @ 35°C
- LED luminaires shall have Thermal Throttle to prevent over temperature
- LED luminaires shall have upgradeable boards and drivers
- LED luminaires shall have removable gear trays with Cam locks
- LED luminaires shall employ ceramic based LED's with ZHAGA compliant boards
- LED Luminaires shall have a minimum 10 year warranty





XERO
TECHNOLOGY
INFRASTRUCTURE **XTI** **I**

XTI | 5.0 Inground Uplight
IP67 | IK10+



General enquiries
E headoffice@xerolighting.com W xerolighting.com
To get in touch with your local Xero
Distributor Visit www.xerolighting.com/contacts



The information contained within this specification sheet is for general information purposes only. While Xero aspires to keep the information up to date and correct, we make no representations or warranties of any kind about the accuracy, reliability, suitability or availability with respect to this information, products, services, or graphics contained in this specification sheet for any purpose.