

XERO  
TECHNOLOGY  
ADVANCED 

## XTA | 1.5 Slot

metric

40mm Wide x 68mm High

imperial

1.748" Wide x 2.677" High

## DATA TABLE

LED Engine	4ft Length 1120mm	Luminous Flux (Delivered Lumens)	LO 1900	HO 3500	
	Xeramix	CRI	80+		
		Lumen Maintenance:	114,000 Hours ( L90 B10 @ 50° )		
	Proformax	CRI:	90+		
		Lumen Maintenance:	82,000 Hours ( L80 B10 @ 35° )		
<b>Warranty</b>	Xeramix	10 years			
	Proformax	7 years			
<b>Electrical</b>	Power Consumption	Between 20 and 45w/m			
	Voltage input range	120 – 277V			
	Control methods	Dimming options for white light: 0-10V, DALI, DMX Optional RGB / Sunset Dimming control DMX or DALI XI			
	Total harmonic distortion THD	9.8% max			
	Approvals	UL / CE / CCC / AS:NZS / EMC			
<b>Physical</b>	Dimensions	40 X 73 mm			
	Weight per metre	3.2kg (7lbs) average weight			
	Housing	Aluminium Extrusion with anodised or powdercoated finish			
	Downward diffuser	Frosted acrylic lens / Polycarbonate lens / microprism lens			
	Connections	Speed connect joining system with polarised electrical connection between sections			
	Compatible ceiling type	Suitable for drywall ceilings, metal pan, concrete, timber and T bar grid ceilings			
	Mounting	Field adjustable rollerball wire suspensions / rod suspensions / wall mounting / surface mount			
	Joiner options	Lit corner 90° / Cross 90° / Tee 90° / Straight 180° join			
	Operating temperatures	Xeramix = -25°C to 50°C (-13°F to 140°F) Proformax = -25°C to 35°C (-13°F to 95°F)			
	Environment	Dry indoor applications only			
	Minimum length adjustment	Xeramix = 1mm Proformax = 25mm			
	LED board types	Xeramix LED boards in 25 / 100 / 280 / 560mm lengths Zhaga compatible Proformax LED boards in 50 / 280mm / 560mm lengths Zhaga compatible			

## PENDANT LENGTHS

DESCRIPTION	PENDANT LENGTHS										
luminaire length	585	863.60	1143.00	1422.40	1701.80	1981.30	2260.60	2540.00	2819.40	3098.80	3378.20
inches	23	34	45	56	67	78	89	100	111	122	133
'560 board multiples	1	1.5	2.0	2.5	3.0	3.5	4.0	4.5	5.0	5.5	6.0

## CONTINUOUS LENGTHS

DESCRIPTION	CONTINUOUS RUNS										
total luminaire length	3657.60	3937.00	4216.40	4495.80	4775.20	5054.60	5334.00	5892.80	5892.80	6172.20	6451.60
inches	144	155	166	177	188	199	210	232	232	243	254
'560 board multiples	6.5	7	7.5	8.0	8.5	9.0	9.5	10.0	10.5	11.0	11.5

DESCRIPTION	CONTINUOUS RUNS										
total luminaire length	3657.60	3937.00	4216.40	4495.80	4775.20	5054.60	5334.00	5892.80	5892.80	6172.20	6451.60
inches	144	155	166	177	188	199	210	232	232	243	254
'560 board multiples	6.5	7	7.5	8.0	8.5	9.0	9.5	10.0	10.5	11.0	11.5

## CUSTOM LENGTHS

CUSTOM LENGTHS
custom lengths are available in 0.0393701" [1mm] increments above the minimum pendant length of 23" [585mm]



XTA | 1.5 Slot  
indoor series IP20

# Optical control

All XTA profiles come with many diffuser options for glare control in any application



polycarbonate

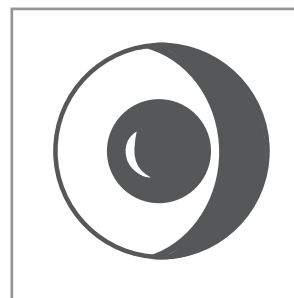


plexiglass

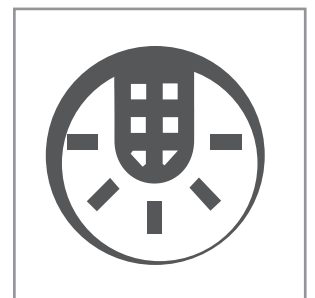


micropriam

# Accessories and options



sensors / daylight  
harvesting



emergency packs





The Xero Configurator allows you to design and build your customised lighting system. To ensure that your profile specifically caters to your project application follow the simple 8 step build process to obtain your unique DNA code. Select your profile, choose your colour, length, gear tray, output, colour temperature, mounting requirement and choose from the selection of extras

The X-Configurator can be accessed at [xerolighting.com/xconfigurator](http://xerolighting.com/xconfigurator)

**Project Specification Sheet**

**XTA 3.0 Beam**

Name: Joe Smith  
Company: Joe Smiths Company  
Email: joesmith@joesmithcompany.com.au

Project: A very big project

Fitting Type: S1

Series: XTA - Advanced  
IP Rating: IP55  
LED Board: Xeramix X1  
Size: 3.0 Inches Down / 1.5 inches Up  
Shape: Beam  
Light Output: Up / Down  
Diffuser: Plexiglass Down / Parabolic Louver Up  
Colour Temp: 3000K Down / 5000K Up  
Drive Current: Drive Current Down / Drive Current Up  
Total Light: Total Light Down / Total Light Up  
Total Power: Total Power Down / Total Power Up  
Efficiency: Efficiency Down / Total Power Up

Copy and Paste into your project specification

**SPECIFICATION TEXT**  
Copy and Paste into your project specification

Type xx - XXM Xero XTA | 3.0 Square with Micro Prism diffuser, Xeramix I LED light engine, 3000°K, 50°C ambient temperature, L90 B10 14 hour life, 275Ma drive current. Efficacy of 512 lumens per watt delivered. Fitting comes complete with Speed-Connect joining system, Conseal end plates and Lumiseal. Wire suspended with rollerball suspension system.

**RE - CONFIGURE THIS SPECIFICATION**  
This project specification sheet has been generated with X Configurator. Click below to reconfigure and generate a new specification sheet.

[Configurator](#) [Click to re-configure](#)

ADELAIDE | AUCKLAND | BRISBANE | CHRISTCHURCH | DUNEDIN | HONG KONG  
KUALA LUMPUR | SYDNEY | MELBOURNE | PERTH | USA | WELLINGTON

**XTA ADVANCED**  
**XERAMIX I**  
**10 YEAR WARRANTY**  
**SPEED CONNECT**  
**LUMISEAL**  
**CONSEAL**  
**XEROLIGHTING.COM**

to access the X-configurator please visit [www.xerolighting.com/xconfigurator](http://www.xerolighting.com/xconfigurator)

**General Specifications:**

LED luminaries shall employ ceramic based LED's with ZHAGA compliant boards

LED luminaries shall have removable gear trays

LED luminaries shall have upgradeable boards and drivers

LED luminaries shall have light leak free joining systems

LED Luminaires shall have 114,000 hour life to L90 B10 @ 35°C

LED Luminaires shall have colour spatial uniformity of 3 step macadam ellipse at end of life

LED luminaries shall have site adjustable drive current selection capability without the need for additional parts

LED Luminaires shall have thermal ambient temperature rating of 50°C

XTA | 1.5 Slot

indoor series IP20

# Mounting



Wire Suspended



Rod Suspended



Wall Mounted



Pendant

## XTA | 1.5 Slot indoor series IP20

# Meet the family

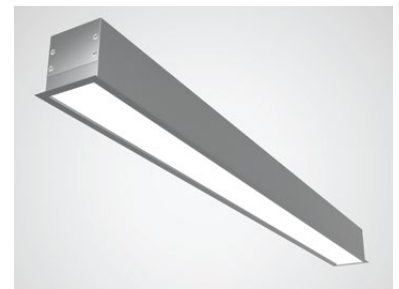
### XTA | 1.5 Beam

The XTA 1.5 series is a slim body profile that has superior optics and Xero's patented Speed Connect system that enables truly "light leak free joins" and removable gear trays that can be upgraded in the future.



### XTA | 2.0 Recessed

The XTA 1.5 series is a slim body profile that has superior optics and Xero's patented Speed Connect system that enables truly "light leak free joins" and removable gear trays that can be upgraded in the future.



### XTA | 2.0 Square

The XTA 1.5 series is a slim body profile that has superior optics and Xero's patented Speed Connect system that enables truly "light leak free joins" and removable gear trays that can be upgraded in the future.



---

General enquiries  
E [headoffice@xerolighting.com](mailto:headoffice@xerolighting.com) W [xerolighting.com](http://xerolighting.com)  
To get in touch with your local Xero Distributor  
Visit [xerolighting.com/contact](http://xerolighting.com/contact)



The information contained within this specification sheet is for general information purposes only. While Xero aspires to keep the information up to date and correct, we make no representations or warranties of any kind about the accuracy, reliability, suitability or availability with respect to this information, products, services, or graphics contained in this specification sheet for any purpose.