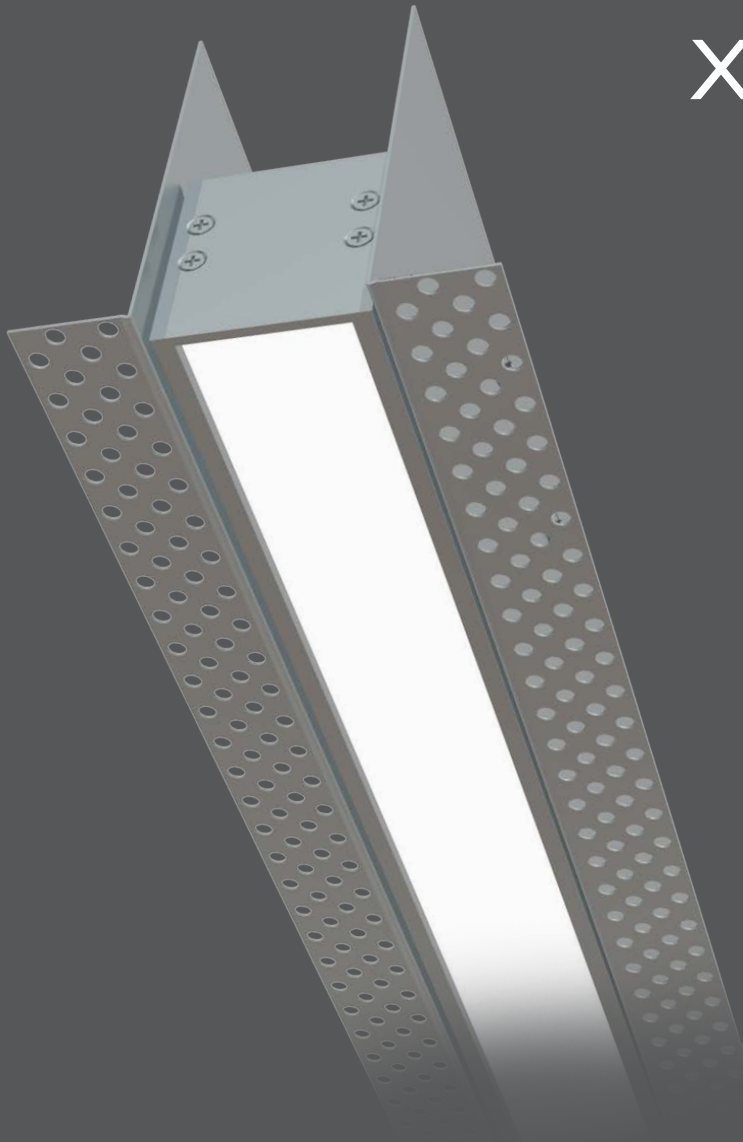


XERO
TECHNOLOGY
ADVANCED XTA



XTA | 2.0 Square TR Trimless Recessed

IP20 interior

metric	(Niche) 133mm wide x 120mm high
imperial	5.236" Wide x 4.724"H
metric	(Luminaire) 60mm wide x 65mm high
imperial	2.362" Wide x 2.559"H



XTA | 2.0 Square TR

Trimless Recessed
IP20 indoor series

Highly Configurable

All XTA products can be made with lit, or unlit, corners which provide the designer with a myriad of design options.



bend options



135°



cross 90°



tee 90°



custom



corner 90°



ceiling to wall

DATA TABLE

Output	4ft Length 1120mm	Luminous Flux (Delivered Lumens)	LO 1900	HO 3500
	CRI			80+
Lumen Maintenance			114,000 hours [L90 B10 @ 35°C] 1M hours [L70 B10 @ 35°C]	
Warranty			Xeramix 1 = 114,000 hours or Xeramix R = 1 million hours	
Electrical	Power Consumption	Between 20 and 45w/m		
	Voltage input range	120 - 277V		
	Control methods	Dimming options for white light: 0-10V, DALI, DMX / Optional RGB / Sunset Dimming control: DMX or DALI XI		
	Total harmonic distortion THD	9.8% max		
	Approvals	UL / CE / CCC / AS:NZS / EMC		
Physical	Dimensions – (Niche)	133mm wide x 120mm high		
	Dimensions – (Luminaire)	60mm wide x 65mm high		
	Weight per metre (Niche)	3kg (6.6lbs) average weight		
	weight per metre (Luminaire)	3kg (6.6lbs) average weight		
	Housing	Aluminium Extrusion with anodised or powder-coated finish		
	Diffuser	Frosted acrylic lens / Polycarbonate lens / Microprism lens		
	Connections	Speed connect joining system with polarised electrical connection between sections		
	Compatible ceiling type	Suitable for gyprock (drywall) ceilings		
	Mounting	Site adjustable plaster trim kit (only)		
	Joiner options	Lit corner 90°/ Cross 90°/ Tee 90°/ straight 180° join		
	Operating temperatures	-25°C to 50°C (-13F to 140°F)		
	Environment	Dry – Indoor applications only		
	Minimum length adjustment	25mm		
	LED board types	XERAMIX LED boards in 25mm / 100mm / 280mm / 560mm lengths ZHAGA compatible		



PENDANT LENGTHS

DESCRIPTION	PENDANT LENGTHS										
luminaire length	585	863.60	1143.00	1422.40	1701.80	1981.30	2260.60	2540.00	2819.40	3098.80	3378.20
inches	23	34	45	56	67	78	89	100	111	122	133
'560 board multiples	1	1.5	2.0	2.5	3.0	3.5	4.0	4.5	5.0	5.5	6.0

CONTINUOUS LENGTHS

DESCRIPTION	CONTINUOUS RUNS										
total luminaire length	3657.60	3937.00	4216.40	4495.80	4775.20	5054.60	5334.00	5892.80	5892.80	6172.20	6451.60
inches	144	155	166	177	188	199	210	232	232	243	254
'560 board multiples	6.5	7	7.5	8.0	8.5	9.0	9.5	10.0	10.5	11.0	11.5

DESCRIPTION	CONTINUOUS RUNS										
total luminaire length	3657.60	3937.00	4216.40	4495.80	4775.20	5054.60	5334.00	5892.80	5892.80	6172.20	6451.60
inches	144	155	166	177	188	199	210	232	232	243	254
'560 board multiples	6.5	7	7.5	8.0	8.5	9.0	9.5	10.0	10.5	11.0	11.5

CUSTOM LENGTHS

CUSTOM LENGTHS
custom lengths are available in 0.984252" [25mm] increments above the minimum pendant length of 23" [585mm] using Xeramix boards



XTA | 2.0 Square TR
Trimless Recessed
IP20 indoor series

Optical control

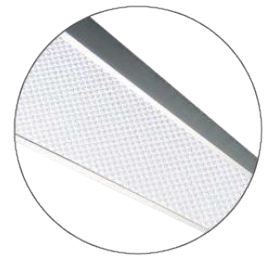
All XTA profiles come with many diffuser options for glare control in any application



polycarbonate

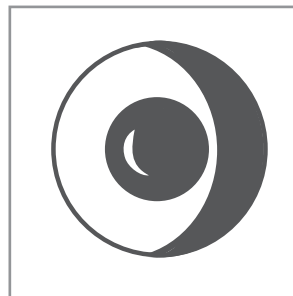


plexiglass

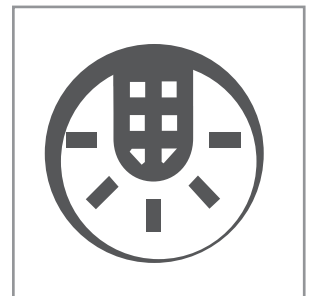


micropriism

Accessories and options



sensors / daylight
harvesting



emergency packs



XTA | 2.0 Square TR

Trimless Recessed
IP20 indoor series



The Xero Configurator allows you to design and build your customised lighting system. To ensure that your profile specifically caters to your project application follow the simple 8 step build process to obtain your unique DNA code. Select your profile, choose your colour, length, gear tray, output, colour temperature, mounting requirement and choose from the selection of extras

The X-Configurator can be accessed at <http://xconfigurator.xerolighting.com/>

Project Specification Sheet

XTA 3.0 Beam

Name	Joe Smith
Company	Joe Smiths Company
Email	joesmith@joesmithcompany.com.au
Project	A very big project
Fitting Type	<input type="text" value="S1"/>
Series	XTA - Advanced
IP Rating	IP55
LED Board	Xeramix X1
Size	3.0 Inches Down / 1.5 Inches Up
Shape	Beam
Light Output	Up / Down
Diffuser	Plexiglass Down / Parabolic Louver Up
Colour Temp	3000K Down / 5000K Up
Drive Current	Drive Current Down / Drive Current Up
Total Light	Total Light Down / Total Light Up
Total Power	Total Power Down / Total Power Up
Efficiency	Efficiency Down / Total Power Up

Copy and Paste into your project specification

SPECIFICATION TEXT
Copy and Paste into your project specification

Type xx - XXM Xero XTA | 3.0 Square with Micro Prism diffuser, Xeramix I LED light engine, 3000K, 50°C ambient temperature, L90 B10 114 hour life, 275Ma drive current. Efficacy of 512 lumens per watt delivered. Fitting comes complete with Speed-Connect joining system, Con Seal end plates and Lumiseal. Wire suspended with rollerball suspension system.

RE - CONFIGURE THIS SPECIFICATION
This project specification sheet has been generated with X Configurator. Click below to reconfigure and generate a new specification sheet.

[Click to re-configure](#)

ADLAIDE | AUCKLAND | BRISBANE | CHRISTCHURCH | DUNEDIN | HONG KONG
KUALA LUMPUR | SYDNEY | MELBOURNE | PERTH | USA | WELLINGTON

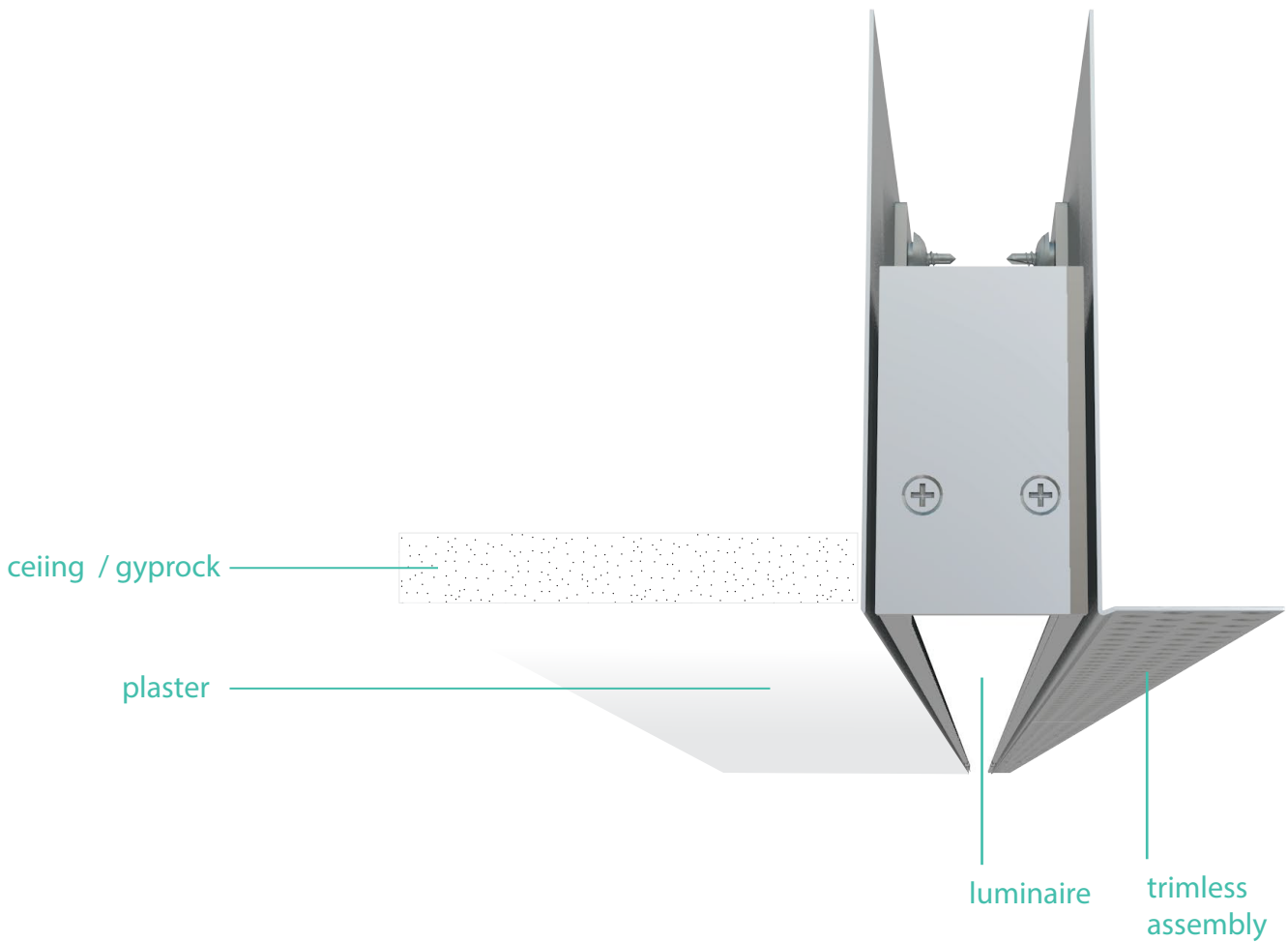
ADVANCED
 XERAMIX X1
10 YEAR WARRANTY
SPEED CONNECT
LUMISEAL
CON SEAL
XEROLIGHTING.COM

to access the X-configurator please visit <http://xconfigurator.xerolighting.com/>

General Specifications:

- LED luminaries shall employ ceramic based LED's with ZHAGA compliant boards
- LED luminaries shall have removable gear trays
- LED luminaries shall have upgradeable boards and drivers
- LED luminaries shall have light leak free joining systems
- LED Luminaires shall have 114,000 hour life to L90 B10 @ 50°C
- LED Luminaires shall have colour spatial uniformity of 3 step macadam ellipse at end of life
- LED luminaries shall have site adjustable drive current selection capability without the need for additional parts
- LED Luminaires shall have thermal ambient temperature rating of 50°C

Trimless Mounting

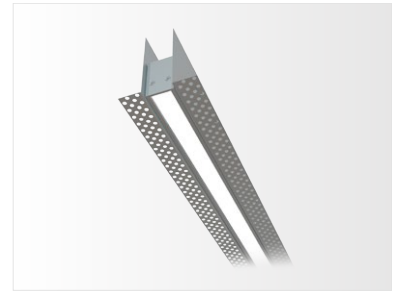


For Trimless Recessed installation instructions refer to <https://xerolighting.com/products/xta-2-0-square-tr/>

XTA | 2.0 Square TR
indoor series IP20

Meet the family

XTA | 1.5 Slot TR



XTA | 2.0 Square TR



XTA | 3.0 Square TR



General enquiries
E lights@xerolighting.com W xerolighting.com
To get in touch with your local Xero
Distributor Visit [XEROContacts](#)



The information contained within this specification sheet is for general information purposes only. While Xero aspires to keep the information up to date and correct, we make no representations or warranties of any kind about the accuracy, reliability, suitability or availability with respect to this information, products, services, or graphics contained in this specification sheet for any purpose.