

XERO
TECHNOLOGY
ADVANCED XTA

XTA | 3.0 Square DI

metric 80mm Wide x 87mm High

imperial 3.149" Wide x 3.425" High



DATA TABLE

Output	4ft Length 1120mm	Luminous Flux (Delivered Lumens)	LO 1900	HO 3500	
	Xeramix	CRI	80+		
		Lumen Maintenance:	114,000 Hours (L90 B10 @ 50°)		
	Proformax	CRI:	90+		
		Lumen Maintenance:	82,000 Hours (L80 B10 @ 35°)		
Warranty			Xeramix 1 = 114,000 hours or Xeramix R = 1 million hours		
Electrical	Power Consumption		Between 20 and 45w/m		
	Voltage input range		120 – 277V		
	Control methods		Dimming options for white light: 0-10V, DALI, DMX Optional RGB / Sunset Dimming control DMX or DALI XI		
	Total harmonic distortion THD		9.8% max		
	Approvals		UL / CE / CCC / AS:NZS / EMC		
Physical	Dimensions		80mm wide x 87mm high (96mm high including upward diffuser)		
	Weight per metre		4kg (8.8lbs) average weight		
	Distribution		Symmetric / Asymmetric		
	Housing		Aluminium Extrusion with anodised or powder-coated finish		
	Upward diffuser		frosted acrylic lens / Polycarbonate lens / microprism lens		
	Downward diffuser		frosted acrylic lens / Polycarbonate lens / microprism lens / white optic low brightness louvre		
	Connections		speed connect joining system with polarised electrical connection between sections		
	Compatible ceiling type		suitable for gyprock (drywall) ceilings, metal pan, concrete, timber and T-bar grid ceilings		
	Mounting		Field adjustable rollerball wire suspensions / rod suspensions / wall mounting / surface mount		
	Joiner options		lit corner 90°/ Cross 90°/ Tee 90°/ Straight 180° Join		
	Operating temperatures		Xeramix = -25°C to 50°C (-13°F to 140°F) Proformax = -25°C to 35°C (-13°F to 95°F)		
	Environment		Dry – Indoor applications only		
	Minimum length adjustment		Xeramix = 1mm Proformax = 25mm		
	LED board types		XERAMIX LED boards in 25mm / 100mm / 280mm / 560mm lengths ZHAGA compatible		

PENDANT LENGTHS

DESCRIPTION	PENDANT LENGTHS										
luminaire length	585	863.60	1143.00	1422.40	1701.80	1981.30	2260.60	2540.00	2819.40	3098.80	3378.20
inches	23	34	45	56	67	78	89	100	111	122	133
'560 board multiples	1	1.5	2.0	2.5	3.0	3.5	4.0	4.5	5.0	5.5	6.0

CONTINUOUS LENGTHS

DESCRIPTION	CONTINUOUS RUNS										
total luminaire length	3657.60	3937.00	4216.40	4495.80	4775.20	5054.60	5334.00	5892.80	5892.80	6172.20	6451.60
inches	144	155	166	177	188	199	210	232	232	243	254
'560 board multiples	6.5	7	7.5	8.0	8.5	9.0	9.5	10.0	10.5	11.0	11.5

DESCRIPTION	CONTINUOUS RUNS										
total luminaire length	3657.60	3937.00	4216.40	4495.80	4775.20	5054.60	5334.00	5892.80	5892.80	6172.20	6451.60
inches	144	155	166	177	188	199	210	232	232	243	254
'560 board multiples	6.5	7	7.5	8.0	8.5	9.0	9.5	10.0	10.5	11.0	11.5

CUSTOM LENGTHS

CUSTOM LENGTHS
custom lengths are available in 0.0393701" [1mm] increments above the minimum pendant length of 23" [585mm]

Optical control

All XTA profiles come with many diffuser options for glare control in any application



polycarbonate



plexiglass

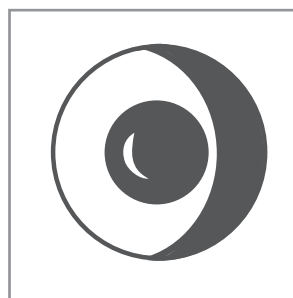


microprism



optic white
louvre

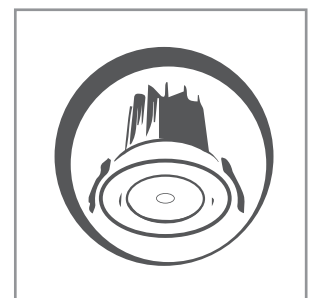
Accessories and options



sensors / daylight
harvesting



emergency packs



downlights

XERO TECHNOLOGY ADVANCED **XTA**

XTA | 3.0 Square DI
indoor series IP20



The Xero Configurator allows you to design and build your customised lighting system. To ensure that your profile specifically caters to your project application follow the simple 8 step build process to obtain your unique DNA code. Select your profile, choose your colour, length, gear tray, output, colour temperature, mounting requirement and choose from the selection of extras

The X-Configurator can be accessed at xerolighting.com/xconfigurator

Project Specification Sheet

XTA 3.0 Beam

Name: Joe Smith
Company: Joe Smiths Company
Email: joesmith@joesmithcompany.com.au

Project: A very big project
Fitting Type: S1

Series: XTA - Advanced
IP Rating: IP55
LED Board: Xeramix X1
Size: 3.0 Inches Down / 1.5 Inches Up
Shape: Beam
Light Output: Up / Down
Diffuser: Plexiglass Down / Parabolic Louver Up
Colour Temp: 3000K Down / 5000K Up
Drive Current: Drive Current Down / Drive Current Up
Total Light: Total Light Down / Total Light Up
Total Power: Total Power Down / Total Power Up
Efficiency: Efficiency Down / Total Power Up

Copy and Paste into your project specification

SPECIFICATION TEXT
Copy and Paste into your project specification

Type xx - XXM Xero XTA | 3.0 Square with Micro Prism diffuser, Xeramix I LED light engine, 3000°K, 50°C ambient temperature, L90 B10 14 hour life, 275Ma drive current. Efficacy of 512 lumens per watt delivered. Fitting comes complete with Speed-Connect joining system, Con Seal end plates and Lumiseal. Wire suspended with rollerball suspension system.

RE - CONFIGURE THIS SPECIFICATION
This project specification sheet has been generated with X Configurator. Click below to reconfigure and generate a new specification sheet.

Configurator [Click to re-configure](#)

ADELAIDE | AUCKLAND | BRISBANE | CHRISTCHURCH | DUNEDIN | HONG KONG
KUALA LUMPUR | SYDNEY | MELBOURNE | PERTH | USA | WELLINGTON

XTA ADVANCED
XERAMIX1
10 YEAR WARRANTY
SPEED CONNECT
LUMISEAL
CON SEAL

XEROLIGHTING.COM

to access the X-configurator please visit www.xerolighting.com/xconfigurator

General Specifications:

LED luminaires shall employ ceramic based LED's with ZHAGA compliant boards
LED luminaires shall have removable gear trays
LED luminaires shall have upgradeable boards and drivers
LED luminaires shall have light leak free joining systems
LED Luminaires shall have 114,000 hour life to L90 B10 @ 35°C
LED Luminaires shall have colour spatial uniformity of 3 step macadam ellipse at end of life
LED luminaires shall have site adjustable drive current selection capability without the need for additional parts
LED Luminaires shall have thermal ambient temperature rating of 50°C



Mounting



Wire Suspended



Rod Suspended



Wall Mounted



Pendant

XERO TECHNOLOGY ADVANCED **XTA**

XTA | 3.0 Square DI
indoor series IP20

meet the family

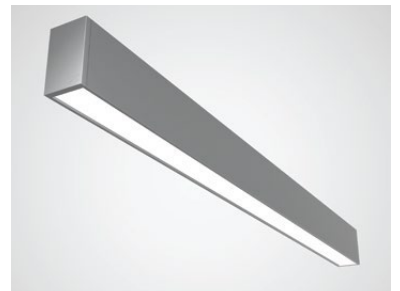
XTA | 3.0 Beam

The XTA 3.0 series is a wide body profile that has superior optics and Xero's patented Speed Connect system that enables truly "light leak free joins" and removable gear trays that can be upgraded in the future.



XTA | 3.0 Slot

The XTA 3.0 series is a wide body profile that has superior optics and Xero's patented Speed Connect system that enables truly "light leak free joins" and removable gear trays that can be upgraded in the future.



XTA | 3.0 Recessed

The XTA 3.0 series is a wide body profile that has superior optics and Xero's patented Speed Connect system that enables truly "light leak free joins" and removable gear trays that can be upgraded in the future.



XTA | 3.0 Square

The XTA 3.0 series is a wide body profile that has superior optics and Xero's patented Speed Connect system that enables truly "light leak free joins" and removable gear trays that can be upgraded in the future.



General Enquiries: Elights@xerolighting.com www.xerolighting.com | To get in touch with your local Xero Distributor visit www.xerolighting.com/contacts

The information contained within this specification sheet is for general information purposes only. While Xero aspires to keep the information up to date and correct, we make no representations or warranties of any kind about the accuracy, reliability, suitability or availability with respect to this information, products, services, or graphics contained in this specification sheet for any purpose.

General enquiries
E lights@xerolighting.com W xerolighting.com
To get in touch with your local Xero
Distributor Visit [XEROContacts](#)



The information contained within this specification sheet is for general information purposes only. While Xero aspires to keep the information up to date and correct, we make no representations or warranties of any kind about the accuracy, reliability, suitability or availability with respect to this information, products, services, or graphics contained in this specification sheet for any purpose.