

XERO
TECHNOLOGY
ADVANCED 

XTA | 3.0 Beam

Size

3.15" Wide x 5.90" High

XTA | 3.0 Beam

DATA TABLE

Output	CRI	80+
Warranty	Proformax	7 years
Electrical	Voltage input range	120 – 277V
	Control methods	Dimming options for white light: 0-10V, DALI, DMX Optional RGB / Sunset Dimming control DMX or DALI XI
	Total harmonic distortion THD	9.8% max
	Approvals	UL / CE / CCC / AS:NZS / EMC
Physical	Dimensions	3.15" W x 5.90" H
	Weight	4.23 Lbs weight per foot
	Housing	Aluminium Extrusion with anodised or powder-coated finish Standard colours powder-coated: white/black/silver/ custom on request
	Upward diffuser	Frosted acrylic lens / Polycarbonate lens / microprism lens
	Downward diffuser	Frosted acrylic lens / Polycarbonate lens / microprism lens / white optic low brightness louver
	Connections	Speed connect joining system with polarised electrical connection between sections
	Compatible ceiling type	Suitable for drywall ceilings, metal pan, concrete, timber and T bar grid ceilings
	Mounting	Surface Mounting / Custom Mounting / Rod Suspension / Wall Mounting
	Joiner options	Lit corner 90° / Cross 90° / Tee 90° / Straight 180° Join
	Operating temperatures	ProformaxS – (-13°F to 140°F)
	Environment	Dry indoor application only IP20
	Minimum length adjustment	5.51"
	LED Board types	ProformaxS boards in 5.51" / 11.02" / 22.0" lengths Zhaga compatible
	Optional Extras	Emergency packs

XTA | 3.0 Beam

indoor series IP20

Optical control

All XTA profiles come with many diffuser options for glare control in any application



polycarbonate



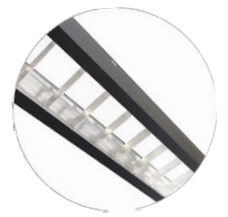
plexiglass



microprism

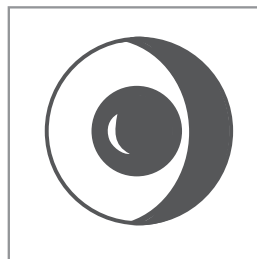


optic white

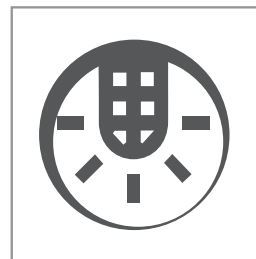


semi specular
louvre

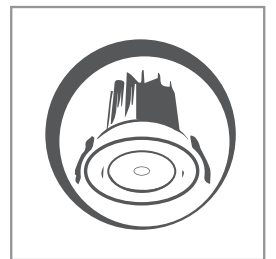
Accessories and options



sensors / daylight
harvesting



emergency packs



downlights

Bend options



135°



cross 90°



tee 90°



custom



corner 90°



ceiling to wall