

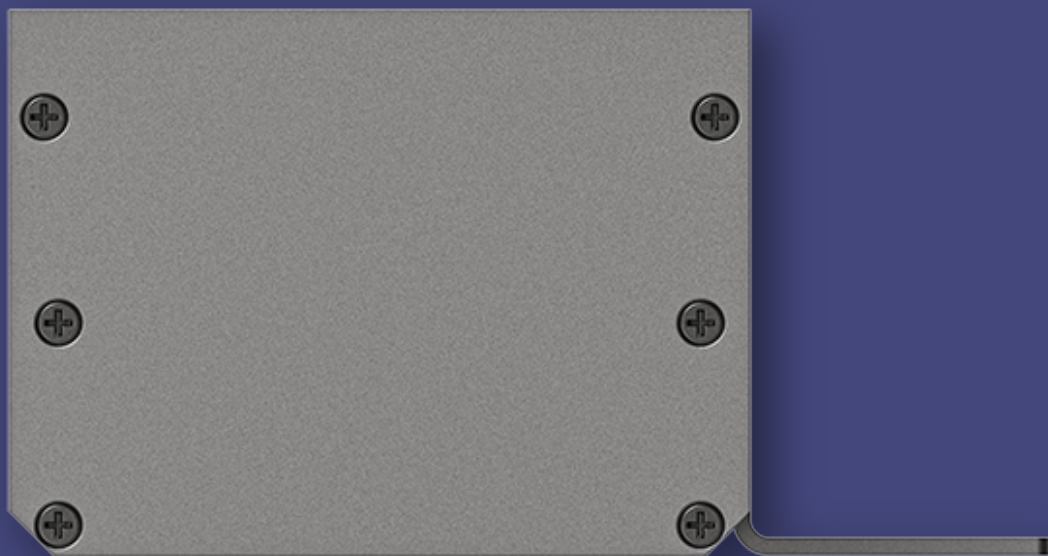
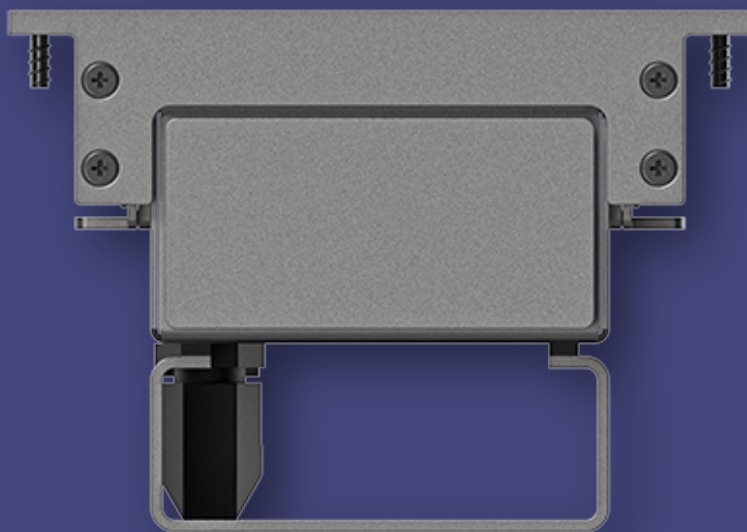
# XTI | 5.0 Inground Uplight

IK11 | IP67

Size

4.80" Wide x 3.54" High

Dimensions include inground niche.



## DATA TABLE

<b>Output</b>	CRI	80+
<b>Warranty</b>	ProformaxS	ProformaxS = 7 years
<b>Electrical</b>	Voltage input range	120 – 277V
	Control methods	Dimming options for white light: 0-10V, DALI, DMX Optional RGB / Sunset Diming control DMX or DALI XI
	Approvals	UL / CE / CCC / AS:NZS / EMC
<b>Physical</b>	Dimensions	4.80" x 2.16" excluding the niche
	Weight	5.01 lbs average weight per foot
	Housing	Aluminium Extrusion with anodised or powder-coated finish Standard colours powder-coated: white/black/silver/ custom on request
	Diffuser	Polycarbonate clear or Polycarbonate Plexiglass
	Connections	Optional IP Rated polarised electrical connection between sections
	Distribution	Asymmetric distribution
	Mounting	Inground niche for concrete or paving installation
	Joiner options	Straight joiners or butt corners
	Operating temperatures	ProformaxS (-13°F to 140°F)
	Environment	Luminaire IP67 (Not in direct sunlight, diffuser must not face upwards).
	IK rating	IK10
	Minimum length adjustment	5.51"
	LED board types	ProformaxS boards and drivers in 3.93" / 11.02" / and 22.04" Zhaga compatible
Vandal-proof	Available with anti-vandal fasteners	
Optional extras	Thermal throttle, environmental plug, polarised IP rated plug and socket	

XERO  
TECHNOLOGY  
INFRASTRUCTURE XTI I

XTI | 5.0 Inground Uplight  
IP67 | IK11



## XTI | 5.0 Inground Uplight IP67 / IK11 maximum and minimum length



Please note: Multiple luminaires can be joined together to achieve any continuous length



XTI | 5.0 Inground Uplight  
IP67 | IK10+

# Optical Control

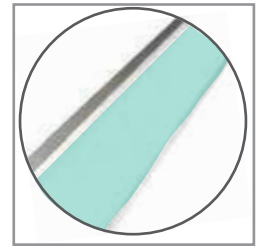
XTI profiles come with many diffuser options for glare control in any application



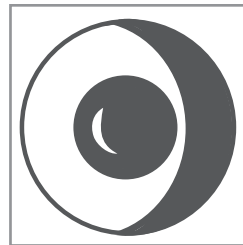
Clear Polycarbonate



Plexi Glass  
Polycarbonate



Coloured  
Interlayer



sensors / daylight  
harvesting



emergency packs