

XERO
TECHNOLOGY
ADVANCED 

XTA | 2.0 Slot

Size

2.36" Wide x 3.58" High



DATA TABLE

| | | |
|-------------------|-------------------------------|--|
| Output | CRI | 90+ |
| Warranty | Proformax S | 7 years |
| Electrical | Voltage input range | 120 – 277V |
| | Control methods | Dimming options for white light: 0-10V |
| | Total harmonic distortion THD | <10% |
| | Approvals | UL / CE / CCC / AS:NZS / EMC |
| Physical | Dimensions | 2.36" Wide x 3.58" High |
| | Weight | 2.57 lbs average weight per foot |
| | Housing | Aluminium extrusion with powder-coated finish: Standard powder-coated colours are: White / black and silver. Custom powder-coat on request |
| | Diffuser | Plexiglass / Polycarbonate Opal Diffuser/ Clear Polycarbonate Diffuser / Optic White Louvre / Semi Specular Louvre / Low UGR Plexiglass |
| | Connections | Speed connect joining system with polarised electrical connection between sections |
| | Compatible ceiling type | Suitable for drywall ceilings, metal pan, concrete, timber and T bar grid ceilings |
| | Mounting | Surface Mounting / Custom Mounting / Rod Suspension / Wall Mounting |
| | Joiner options | Lit corner 90° / Cross 90° / Tee 90° / Straight 180° Join |
| | Operating temperatures | ProformaxS – (-13°F to 95°F) |
| | Environment | Dry indoor application only IP20 |
| | Minimum length adjustment | 5.51" |
| | LED Board types | ProformaxS boards in 5.51" / 11.02" / 22.05" lengths Zhaga compatible |
| | Optional Extras | Emergency packs |

Optical control

All XTA profiles come with many diffuser options for glare control in any application



low UGR
plexiglass



polycarbonate



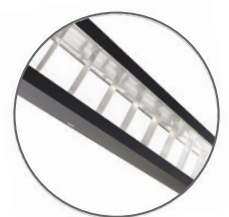
plexiglass



microprism



optic white
louvre



semi specular
louvre

Accessories and options



emergency packs